

## Dates for the Diary

### Presentation Evening

Wednesday 2<sup>nd</sup> April 2025 - 4pm-5pm

### Easter Holidays

Monday 7<sup>th</sup> - Monday 21<sup>st</sup> April 2025

### Year 10 Work Experience

Monday 28<sup>th</sup> April - Friday 9<sup>th</sup> May 2025

### Bank Holiday

Monday 5<sup>th</sup> May 2025

### Half Term

Monday 26<sup>th</sup> - Friday 30<sup>th</sup> May 2025

### Year 10 AP2 Assessments

Monday 30<sup>th</sup> June - Friday 4<sup>th</sup> July 2025

## Student Value of the Term

**WOMEN'S  
RIGHTS  
ARE HUMAN  
RIGHTS**

## House Points - Week Ending 14<sup>th</sup> March



32,434  
AUSTEN



29,668  
ALI



21,098  
HAWKING



18,634  
SEACOLE

## Leadership Message

At the Basildon Academies, we know that some students may find aspects of school challenging; whether it's managing emotions, building relationships, or staying engaged in learning. Our Enhanced Provision is designed to provide the right support for students who need a different approach to thrive.

Our provisions are not only about academic learning but they focus on developing key emotional and social skills that help children succeed in education and beyond. Our work is guided by the 6 Core Strengths Programme, which form the foundation of resilience, confidence, and emotional well-being by covering:

- Attachment – Strong relationships with trusted adults help children feel safe and supported.
- Regulation – Learning how to manage emotions and respond calmly to challenges.
- Affiliation – Building a sense of belonging through positive peer relationships.
- Awareness – Developing an understanding of others' feelings, perspectives, and the impact of actions.
- Tolerance – Learning to navigate differences and develop patience and empathy.
- Respect – Encouraging positive choices and self-belief.

The Enhanced Provision provides small-group learning, structured emotional well-being support, and personalised strategies to help students feel more confident and engaged in their education.

**V.Oddy - Director of Enhanced Provisions**



There has been a heavy emphasis on the training and development of staff to support them in supporting students. Examples of this include extensive whole staff training in Trauma Perceptive Practice (TPP) and ensuring all key pastoral staff are mental health first aid trained to enable them to triage student need effectively.



Wellbeing Award  
for Schools

2022-2025

## Students of the Week

Congratulations to the following students who have been awarded Student of the Week for week commencing 10<sup>th</sup> March 2025.

- ★ Year 10 - Grace.S (R10Y2)
- ★ Year 11 - Ace.W (R11EPPM)
- ★ Sixth Form - Olumide.A (R1213)

## Safeguarding

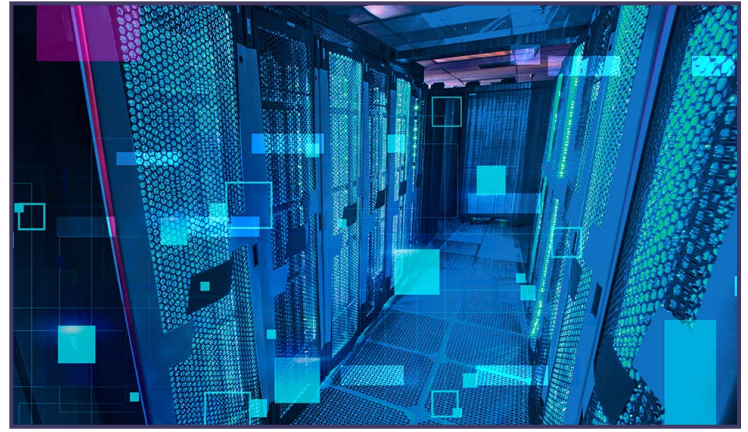
Safeguarding our students is at the forefront of everything we do. Parents and carers can access information via the following link [www.escb.co.uk](http://www.escb.co.uk) which offers guidance and signposts to resources on various safeguarding issues. Please contact our safeguarding officers if you have any concerns about your own child or another student at the Academies.

[www.basildonupperacademy.org.uk/safeguarding](http://www.basildonupperacademy.org.uk/safeguarding)

## Home Learning

If you have any queries regarding home learning, including access issues or, to celebrate the work your child has completed at home, please visit the [Contact Us](#) page via the Basildon Upper Academy website and select the option for General Enquiries.

## Spotlight on: BTEC Level 3 Extended Certificate Computing



This course is aimed at those learners who are interested in an initial introduction to study the Computing sector at Level 3. The course will allow you to gain fundamental knowledge and skills in computing from which you can then progress to broader or more specialist study, although this may not necessarily be in the computing sector.

You will develop strong computer and problem-solving skills whilst undertaking this course.

The BTEC National Extended Certificate is equivalent to one A Level.

Full course information can be found by visiting the following link on our website: [BTEC Level 3 Computing](#)

# Aspire - Believe - Achieve



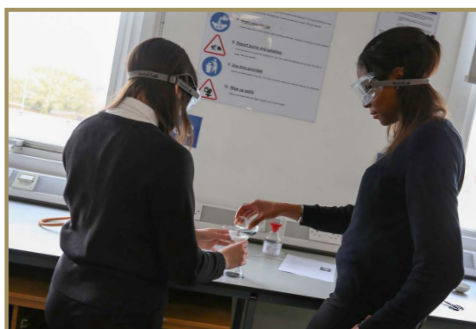
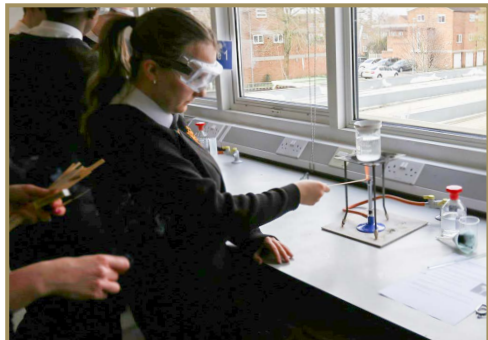
## EXTRA-CURRICULAR SPORTS CLUBS

Monday	Tuesday	Wednesday	Thursday	Friday
<p><b>Before School:</b></p> <ul style="list-style-type: none"> <li>Running Club</li> </ul> <p><b>Lunchtime:</b></p> <ul style="list-style-type: none"> <li>Gym Club (Max 30 spaces)</li> </ul> <p><b>After School:</b></p> <ul style="list-style-type: none"> <li>Netball</li> <li>Girls Football</li> </ul>	<p><b>After School:</b></p> <ul style="list-style-type: none"> <li>Basketball</li> <li>*Gym Club</li> </ul>		<p><b>Before School:</b></p> <ul style="list-style-type: none"> <li>Basketball</li> </ul> <p><b>After School:</b></p> <ul style="list-style-type: none"> <li>Year 11 Sports Studies Intervention</li> <li>Badminton</li> </ul>	<p><b>Before School:</b></p> <ul style="list-style-type: none"> <li>Gym Club</li> </ul> <p><b>Lunchtime:</b></p> <ul style="list-style-type: none"> <li>Young Carers Multi-Sports Club</li> </ul>

\* The After School Gym Club on Tuesdays is postponed until after the Easter Holidays

## Students Explore 'Adapt and Change' During Science Week

Last week, students at the Upper Academy celebrated British Science Week by engaging in a range of fascinating scientific experiments. These included investigating changes of state—from solid to liquid to gas—while exploring the event's theme, 'Adapt and Change.' Students also conducted practical experiments, such as reacting an acid with an alkali to form a neutral solution and creating solid salt crystals. Throughout the week, all students had the opportunity to apply their practical skills and scientific knowledge in hands-on activities related to the British Science Week theme.



## BA Esports Triumph in British Esports Student Champs

Our Year 13 BA Esports team celebrated a fantastic victory this week in the British Esports Student Champs, showcasing their teamwork and problem-solving skills.

Competing in the League of Legends Open Division 1 Round Robin, our team faced off against KE6V Arclight, a rival team from another college. The Best of 1 series was an intense match, but our students remained focused and coordinated, securing a well-earned win.

The British Esports Student Champs matches take place after school on Wednesdays, providing students with the opportunity to engage in competitive gaming while developing valuable skills such as communication, strategy, and collaboration. This latest victory strengthens our team's position as they head towards the playoffs.

Well done to our BA Esports team on their impressive win, we look forward to more success as the tournament continues!



BA Esports team (left to right): Alfie.G, James.P, Kai.L & Paige.J

## New Clubs for Young Carers – Coming Soon

From Monday 24<sup>th</sup> March, we will be launching exciting new activities for our Young Carers.

Following our 'we asked, you said, we did' we are introducing clubs during break and lunch as requested.

To join any of these clubs, please register your child's interest by emailing: [youngcarers@basildonacademies.org.uk](mailto:youngcarers@basildonacademies.org.uk)

Make sure to sign up early to avoid disappointment, as spaces may be limited.

**Young Carer Drop-In:** Until further notice, this will be held in Mrs O'Neill's office.

	Monday	Tuesday	Wednesday	Thursday	Friday
Break 10:00 - 10:30					Advice drop in Safeguarding Office Block B Ground floor
10:30 - 11:00					
Lunch 12:30 - 1:00			E Sports Sign up required	Advice drop in Safeguarding Office Block B Ground floor	Sports club Sign up required
1:00 - 1:30		E Sports Sign up required			
After School 3:30 - 5:00	YC Club				

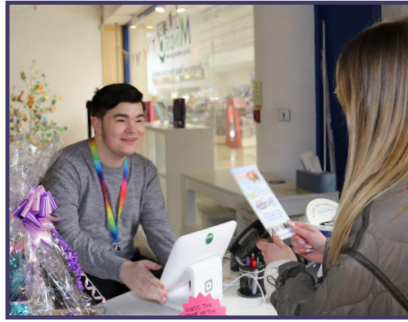
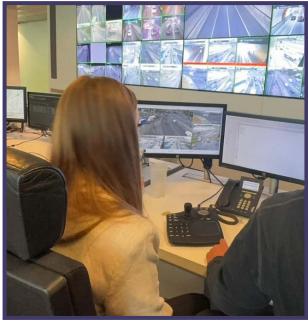
## Important Information for Year 10 Work Experience Selections

The deadline for Year 10 students to make their work experience selections—if they have not yet secured their own placement or chosen through the BEP Webview platform—is **Friday 21<sup>st</sup> March**.

To have the best chance of securing one of their selected placements, students must choose six options and be prepared to attend any of them. Students should note that other schools are also accessing the BEP Webview platform for the same dates, meaning some placements will be in the Redbridge and Waltham Forest areas. While students can select any placement, they must ensure they can travel to the location. A pop-up message will prompt them to check the postcode and journey before confirming each selection. They can also narrow their search by area on the system.

You can access the BEP Portal here: [Veryan Webview - Student Log In](#)

For detailed instructions on using the BEP Webview platform and making selections, please refer to the Student Guide: [BEP Student Guide](#)



## Parent Drop In - Tuesday 18<sup>th</sup> March

This week's Parent Drop In will be on Tuesday 18<sup>th</sup> March between 9.30am and 10.30am.

There will be no need to book an appointment, just sign in at reception and staff will be happy to show you to the venue.

This session will be led by our Assistant Headteacher – Attendance Champion, who will be available to discuss any attendance-related concerns and answer your questions.



## Online Safety Hub: The ABC Model for Digital Safety and Wellbeing

Discover the ABC Model for Digital Safety and Wellbeing, a practical framework designed to help parents support their children in navigating the online world safely and responsibly. Learn how Awareness, Balance, and Communication can promote healthier digital habits. Read more here: <https://basildonacademies.onlinesafetyhub.uk/parent/articles/the-abc-model-for-digital-safety-and-wellbeing>

The Online Safety Hub is an online resource with lots of expert advice and guidance to help find out how to keep our young people safe online. You can access it for free here: [Online Safety Hub - The Basildon Academies](#)



## Important Notice: Smoke and Vape-Free Policy

The Basildon Academies is a smoke and vape free organisation. This prohibits the use of all tobacco products and e-cigarettes on, or in, any Basildon Academy property. This is in place to protect staff, students, and visitors from the effects of second-hand smoke in its buildings and grounds.





Please be reminded that parents and visitors are not permitted to use any smoking products on the grounds of the academies, this includes in our carparks.



# BASILDON ACADEMIES

## WORD OF THE DAY

17<sup>th</sup> - 21<sup>st</sup> March 2025

Monday: <b>St. Patrick's Day</b>	<b>Folklore (Noun) mibeko in Lingala</b> Definition: The traditional beliefs, customs, and stories of a community, passed through the generations by word of mouth. Example: St. Patrick's Day is steeped in Irish folklore, celebrating traditions and legends associated with the saint.	
Tuesday: <b>Global Recycling Day</b>	<b>Sustainability (Noun) udržitelnost in Czech</b> Definition: The ability to be maintained at a certain rate or level, particularly without depleting natural resources. Example: Global Recycling Day emphasises sustainability by encouraging practices that reduce waste and conserve resources.	
Wednesday:	<b>Upcycling (Noun) การรีไซเคิล in Thai</b> Definition: The process of converting waste materials into new materials or products of better quality. Example: Upcycling is a key focus of Global Recycling Day, promoting creative ways to repurpose discarded items.	
Thursday: <b>Spring Equinox</b>	<b>Equinox (Noun) điểm phân in Vietnamese</b> Definition: The time when the sun crosses the plane of the Earth's equator, making day and night of approximately equal length. Example: The Spring Equinox marks the beginning of spring, characterised by equal lengths of day and night.	
Friday: <b>Red Nose Day</b>	<b>Fundraising (Noun) fondsenwerving in Dutch</b> Definition: The act of collecting money for a particular cause or charity. Example: Red Nose Day involves extensive fundraising activities to support various charitable initiatives.	

## Job of the Week: Development Worker

### What does a Development Worker do?

You'll work with individuals, families, and groups in socially or financially deprived areas.

You'll provide leadership and bring local people together to make changes and tackle social inequality.

You'll also help people to develop their skills, knowledge, and experience. You'll work with them to build their confidence so that they can eventually run their own community groups.

You'll address a range of issues in the community, like improving local facilities, leisure and housing, or reducing anti-social behaviour.

### Labour Market Information

UK jobs: 247,174

Essex Jobs: 5,263

Growth: +87.5%

Top 5 LEAs: 1. Kent (5,976) 2. Lancashire (5,815) 3. Essex (5,263)  
4. Hampshire (4,846) 5. Birmingham (4,751)

### What Qualifications do you need to do this job?

You'll need paid or unpaid experience of working in the community or voluntary sector, gained from: volunteering in a local community group or charity or working in a related career like housing, regeneration, social work, youth work or teaching.

You'll also need to pass a criminal records background check.

### Let's Talk Money

UK annual median: £29,013

**Ofsted**  
Good Provider

The school is determined that all pupils can access the curriculum. All pupils in key stage 4 now study French. The school offers pupils a wide range of vocational courses as well as GCSE and A-level qualifications. Pupils are prepared well for the next stage of their education or employment.

Follow The Basildon Upper Academy on our social media channels



## Absence Procedures

To report a student absence please visit the [Contact Us](#) page via the Basildon Upper Academy website and select the option for Attendance.

- Parents/carers must contact the school by 8.30am each day their child is absent.
- If no reason has been received for a child's absence, the Academy will initiate first day calling.
- Parent/carers may be asked for medical evidence to support absences after 3 days or reoccurring absence patterns.
- Wherever possible, parents/carers should make appointments outside of school hours. If this is unavoidable students should attend school before and after the appointment.



Please familiarise yourself with our attendance procedures found on the school website within the Parent Information section, so you know who and when you need to contact us. [www.basildonupperacademy.org.uk/attendance](http://www.basildonupperacademy.org.uk/attendance)

**Did you know?** **90%** of young people with attendance **BELOW** **85%** fail to get good grades.

**MISSING 1 DAY A WEEK**



**LOSING ONE YEAR OF SCHOOL LIFE.**

## Good attendance means:

Being in school at least **97%** of the time, that's at least **184** days a year.

**Target 97%+**



**175**

days are **NOT** spent in school each year.\*

\* Plenty of time for shopping, holidays & appointments.

**190**

Days of education

**184**

Days of education

**171**

Days of education

**162**

Days of education

**152**

Days of education

**143**

Days of education

**100%**

0 days absent

**97%**

6 days absent

**90%**

19 days absent

**85%**

28 days absent

**80%**

38 days absent

**75%**

47 days absent

### **SERIOUSLY WORRIED**

Very poor attendance has a serious impact & reduces life chances.

### **VERY CONCERNED**

Poor attendance gives less chance of success.

### **WELL DONE**

Good attendance gives the best chance of success.



## Red Nose Day Cake & Biscuit Sale Friday 21<sup>st</sup> March



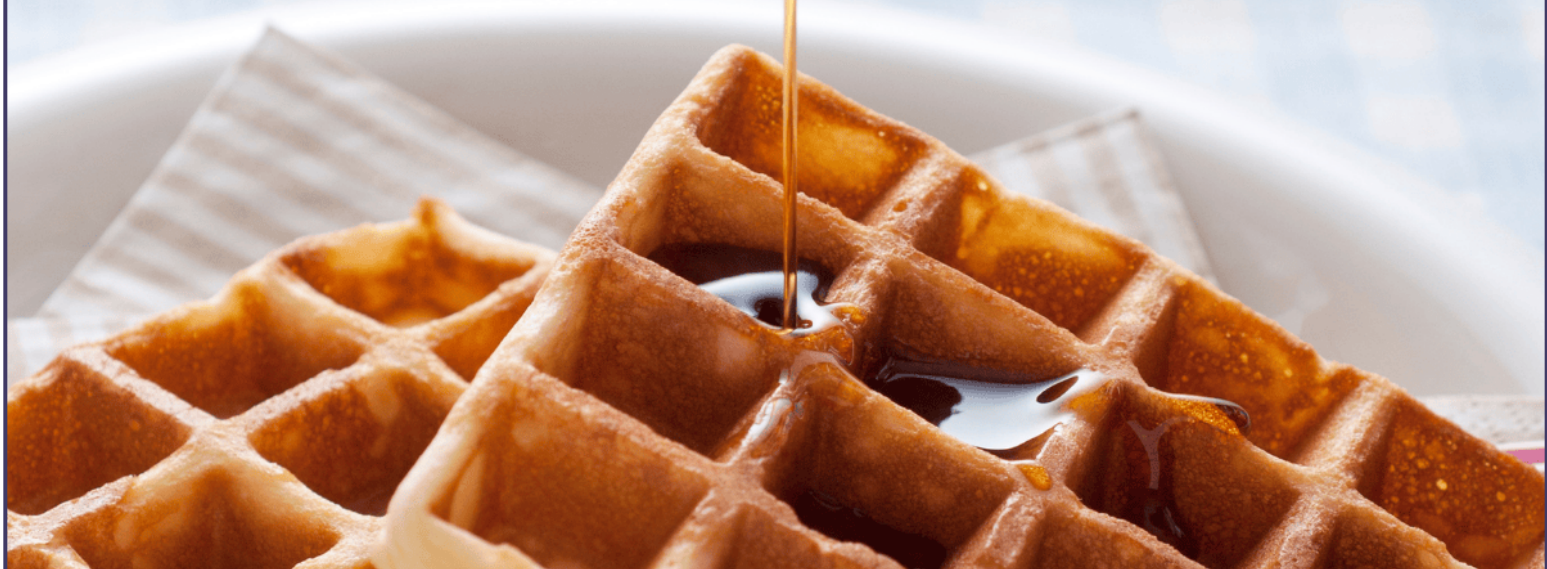
The Dining Hall will be selling a selection of cakes & biscuits on Friday 21<sup>st</sup> March.

Each item will be priced at 50p with all proceeds going to Comic Relief.



# WAFFLE DAY

TO CELEBRATE INTERNATIONAL WAFFLE DAY THE DINING HALL WILL BE SERVING WAFFLES IN ADDITION TO THE REGULAR DESSERT MENU ON TUESDAY **25TH MARCH**



As staff have felt empowered and confident to come forward with their own ideas new developments have flourished. A great example of this is the school play currently taking place which is the first for many years and has been a great opportunity for students and the school to showcase their talents to their school community and the wider community.



Excellence in Pupil  
Development Award

2023-2026