

SIXTH FORM



SIXTH FORM

PROSPECTUS





ASPIRE - BELIEVE - ACHIEVE



Achieving Excellence

Are you looking for a high achieving, engaging, supportive and proactive sixth form where students are challenged to achieve excellence? Then come and embark on the next stage of your learning journey with us.

Success at The Basildon Academies Sixth Form is based on persistent endeavour, targeted support, personalised interventions and quality experiences. We ensure that the high expectations we have of you are matched by the high expectations that students have of themselves.



Rebecca Rees
Headteacher

Choosing a sixth form is a serious and considered decision that needs to be based on the whole experience the college can offer.

At Basildon Upper academy we pride ourselves on ensuring a tailored approach to the individual's educational journey building in enrichment activities, leadership prospects and academic pursuits with exceptional careers guidance. Our aim is that our students who embark on their studies with us, remain with us leaving Year 13 with their personal goals and aspirations achieved with the support of a dedicated team who know them. We also welcome students who wish to study with us for the first time in Year 12 embracing the chance to get to know and support them too.

Support Every Step of the Way

The Basildon Academies Sixth Form will provide students with innovative teachers and support staff that will be with them every step of the way. Our unique pathways of subjects will allow students to thrive.

Our students are rightly proud of our Sixth Form and are highly appreciative of the level of personalised support that enables them to achieve well.

Our Sixth Formers receive a number of unique privileges, including a dedicated area for working and socialising, the chance to act as a role model for younger students through mentoring schemes and outstanding careers advice, including guidance on UCAS and job applications.



We provide the opportunity to follow a personalised timetable that will be inspiring. Our quality teaching and range of innovative learning opportunities will support students in unlocking a passion for learning.

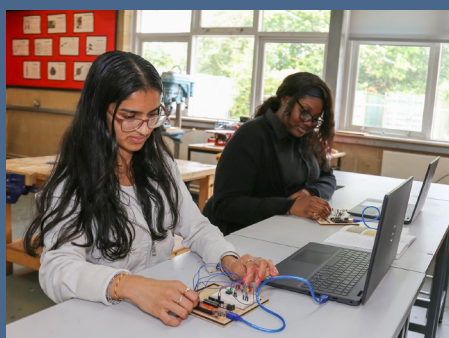
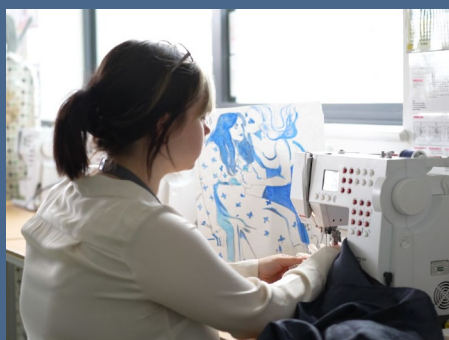
Fully Inclusive Provision

We have a fully inclusive sixth form provision. We offer over 30 different courses that will support your future aspirations. Our students are at the heart of what we do.

Our students are rightly proud of our Sixth Form and are highly appreciative of the level of personalised support that enables them to achieve well.



Kerry McCarthy
Assistant Headteacher Key 5



PATHWAYS

Our commitment lies in providing you with an extensive array of course selections tailored to align with your aspirations and professional objectives. However, we understand that determining the right path for you can pose a challenging decision.

Below, we've provided concise summaries of the various pathways at your disposal to empower you to make a well-informed decision about your future. It's important to remember that making the perfect choice can be elusive at times, but that's perfectly normal, and that's where our expertise plays a pivotal role.

You can schedule a discussion with a member of the Sixth Form Team or attend an open evening to delve deeper into the specifics of the various course options.



Academic Pathway (A Levels)

A-Levels offer numerous opportunities. They provide access to university education and allow you to delve into subjects you're passionate about. Even if you're considering entering the workforce directly, possessing A-Levels demonstrates your curiosity and strong work ethic. Furthermore, A-Levels serve as a versatile option for those uncertain about their future path. Typically, individuals undertake three A-Levels over a two-year period.

When deciding on your subjects, it's essential to consider your strengths and interests. Some universities may have specific subject requirements, and we may recommend particular courses, such as Core Maths, if we believe they will enhance your chances of admission to a specific program.

Advanced Vocational (Vocational)

Vocational courses offer a career-oriented and hands-on approach, serving as a popular alternative to A-Levels. These programs that we offer come in the form of BTEC courses, making them an excellent choice if you have a clear career path in mind or if you prefer coursework over traditional exams.

Pursuing a Vocational qualification won't hinder your university aspirations; in fact, many of our courses hold equivalent standing with A-Levels and are highly respected by universities.

Alternatively, upon completion, you can transition to a work-based qualification such as an apprenticeship or immediately enter the workforce. Vocational qualifications seamlessly blend academic learning with real-world experiences.

Intermediate Vocational

Courses offered are most suitable for students who have not yet achieved a grade 4 in English and Maths. This pathway will support students in working towards their GCSE grade 4 or the equivalent in Functional Skills in English and Maths. Vocational qualifications are available in Levels 1-2.



ASPIRE - BELIEVE - ACHIEVE

A Levels

COURSE	LEVEL	ENTRY REQUIREMENTS
3D Design	3	<ul style="list-style-type: none"> Grade 4 or above, in English Language and Maths. Grade 4 or above in an art and design or creative media GCSE subject is preferred. In exceptional cases when a student has not taken GCSE Art or 3D Design, their application will still be considered during the interview process.
Accounting	3	<ul style="list-style-type: none"> Grade 4 or above in English and Grade 5 or above in Maths.
Art (Fine)	3	<ul style="list-style-type: none"> Grade 5 or above in an Art or Design based subject. If you haven't taken a GCSE in art and design or an art and design-related subject, you can still show a portfolio of work that shows your passion, ability, and commitment to this course.
Biology	3	<ul style="list-style-type: none"> Grade 5 or above in English and Maths. Grade 6 or above in Science.
Chemistry	3	<ul style="list-style-type: none"> Grade 5 or above in English and Maths. Grade 6 or above in Science.
Criminology (Applied)	3	<ul style="list-style-type: none"> Grade 4 or above, in English and Maths. You should have a strong GCSE profile overall with a grade 4 in another written subject such as History, Geography or Media Studies.
Drama & Theatre Studies	3	<ul style="list-style-type: none"> Grade 4 or above, in either English Language or English Literature. Grade 5 or equivalent in GCSE/BTEC Drama. If you have not taken Drama but have experience within Drama, this will be considered at interview.
Engineering	3	<ul style="list-style-type: none"> Grade 4 or above in English. Grade 6 or above in Maths. Grade 5 or above in Art or Design Technology would be advantageous.

A Levels

COURSE	LEVEL	ENTRY REQUIREMENTS
English Literature	3	<ul style="list-style-type: none">Grade 5 or above in GCSE English Language along with a Grade 4 or above in Maths.You should have a strong GCSE profile overall with a Grade 5 in another written subject such as History, Geography or Media Studies
Geography	3	<ul style="list-style-type: none">Grade 4 in GCSE English and Maths.Grade 4 or above in GCSE Geography.
Graphic Design	3	<ul style="list-style-type: none">Grade 5 or above in an Art or Design based subject.If you haven't taken a GCSE in art and design or an art and design-related subject, you can still show a portfolio of work that shows your passion, ability, and commitment to this course.
History	3	<ul style="list-style-type: none">Grade 4 or above in Maths.Grade 5 or above in English Language.You should have a strong GCSE profile overall.
Maths	3	<ul style="list-style-type: none">Grade 6 or above in Maths.Grade 5 or above in English Language.
Maths (Core)	3	<ul style="list-style-type: none">This qualification is studied alongside A-Level Psychology only.
Maths (Further)	3	<ul style="list-style-type: none">Grade 7 or above in GCSE Maths.Grade 5 or above in English Language.
Media Studies	3	<ul style="list-style-type: none">Grade 4 or above in English and Maths .
Politics	3	<ul style="list-style-type: none">Grade 5 or above in English.Grade 4 or above in Maths.You should have a strong GCSE profile overall.

A Levels

COURSE	LEVEL	ENTRY REQUIREMENTS
Photography	3	<ul style="list-style-type: none">• Grade 4 or above in English and Maths.• Ideally a Grade 5 or above in an Art Based Subject.
Physics	3	<ul style="list-style-type: none">• Grade 5 or above in English and Maths.• Grade 6 or above in Science.
Psychology	3	<ul style="list-style-type: none">• Grade 5 or above in English and Maths.• You should have a strong GCSE profile overall.
Sociology	3	<ul style="list-style-type: none">• Grade 5 or above in English and Maths.• You should have a strong GCSE profile overall.
Textiles	3	<ul style="list-style-type: none">• Grade 4 or above in English and Maths.• Ideally a Grade 5 or above in an Art Based Subject.



For detailed course information please scan the QR code.

Vocational Courses

COURSE	LEVEL	ENTRY REQUIREMENTS
3D Design	1	<ul style="list-style-type: none"> For students have not yet secured a Grade 4 in English and Maths
Accounting AAT	3	<ul style="list-style-type: none"> GCSE Grade 4 or above in Maths. Grade 3 or above in GCSE English.
Business Studies	3	<ul style="list-style-type: none"> Grade 4 or above in English and Maths. Ideally a L2 Pass or above in Business Studies.
Computing	3	<ul style="list-style-type: none"> Grade 4 or above in English and Maths. L2 qualification in a computer-based subject.
Construction	1 2	<ul style="list-style-type: none"> Level 1 or 2 qualification. This course is for students who have not yet achieved a Grade 4 or equivalent in English and Maths.
Early Years Practitioner	2	<ul style="list-style-type: none"> Grade 2 or above in English and Maths.
Esports	3	<ul style="list-style-type: none"> Grade 4 or above in English and Maths. L2 qualification in a computer-based subject.
Hairdressing	2	<ul style="list-style-type: none"> Grade 3 or above in English and Maths.
Health & Social Care	2	<ul style="list-style-type: none"> Grade 2 in English and Maths
Hospitality	3	<ul style="list-style-type: none"> Grade 4 or above in English and Maths Ideally a L2 qualification in catering
Information Technology	3	<ul style="list-style-type: none"> Grade 4 or above in English and Maths. L2 qualification in a computer-based subject.
Sport	3	<ul style="list-style-type: none"> Grade 4 or above in English and Maths. L2 qualification or equivalent in a Sport/PE based subject.



@Basildon_UA



@BasildonUpperAcademy



@The_Basildon_Upper_Academy



www.basildonupperacademy.org.uk/sixthform

THE BASILDON ACADEMIES SIXTH FORM